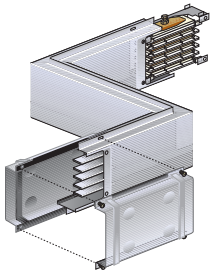
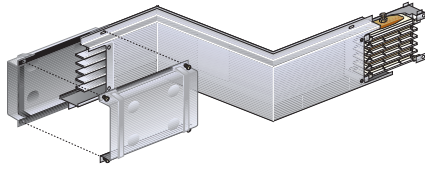


# MR medium rating busbar

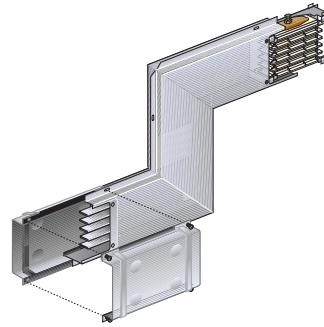
## double elbows



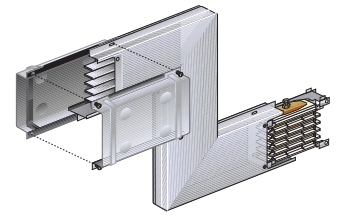
Horizontal elbow – right + left hand



Horizontal elbow – left + right hand



Vertical elbow – right + left hand



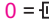

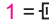

Vertical elbow – left + right hand

 **Dimensions and technical information p. 44**  
**Measuring bespoke dimensions p. 49**

MR is fully compliant with IEC 61439-6 (BS EN 61439-6)  
 Rated currents are at an average ambient temperature of 40° C (over and above the required standard of 35° C)  
 Angles are 90° as standard. Other angles available on request. IP 55 (according to BS EN 60529)

Pack	Cat. Nos.		<b>Double elbows – standard dimensions (300 + 300 + 300 mm)</b>		
	Aluminium	Copper	Rating (A)	Weight (kg)	
				Aluminium	Copper
1	50400341		160	10.29	–
1	50400342	55400342	250	10.55	12.23
1	50400343	55400343	315	11.06	12.97
1	50400344	55400344	400	18.37	15.72
1	50400348		500	19.50	–
1	50400345	55400345	630	20.55	25.77
1	50400346	55400346	800	21.20	30.88
1	50400347 <sup>1</sup>	55400347	1000	21.80	34.55
			<b>Horizontal elbow – right + left hand</b>		
			Rating (A)	Weight (kg)	
				Aluminium	Copper
1	50400351		160	10.29	–
1	50400352	55400352	250	10.55	12.23
1	50400353	55400353	315	11.06	12.97
1	50400354	55400354	400	18.37	15.72
1	50400358		500	19.50	–
1	50400355	55400355	630	20.55	25.77
1	50400356	55400356	800	21.20	30.88
1	50400357 <sup>1</sup>	55400357	1000	21.80	34.55
			<b>Horizontal elbow – left + right hand</b>		
			Rating (A)	Weight (kg)	
				Aluminium	Copper
1	50400441		160	10.29	–
1	50400442	55400442	250	10.55	12.23
1	50400443	55400443	315	11.06	12.97
1	50400444	55400444	400	18.37	15.72
1	50400448		500	19.50	–
1	50400445	55400445	630	20.55	25.77
1	50400446	55400446	800	21.20	30.88
1	50400447 <sup>1</sup>	55400447	1000	21.80	34.55
			<b>Vertical elbow – right + left hand</b>		
			Rating (A)	Weight (kg)	
				Aluminium	Copper
1	50400461		160	10.29	–
1	50400462	55400462	250	10.55	12.23
1	50400463	55400463	315	11.06	12.97
1	50400464	55400464	400	18.37	15.72
1	50400468		500	19.50	–
1	50400465	55400465	630	20.55	25.77
1	50400466	55400466	800	21.20	30.88
1	50400467 <sup>1</sup>	55400467	1000	21.80	34.55
			<b>Vertical elbow – left + right hand</b>		
			Rating (A)	Weight (kg)	
				Aluminium	Copper
1	50400451		160	10.29	–
1	50400452	55400452	250	10.55	12.23
1	50400453	55400453	315	11.06	12.97
1	50400454	55400454	400	18.37	15.72
1	50400458		500	19.50	–
1	50400455	55400455	630	20.55	25.77
1	50400456	55400456	800	21.20	30.88
1	50400457 <sup>1</sup>	55400457	1000	21.80	34.55

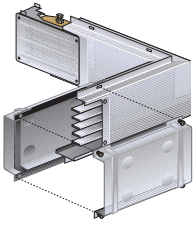
Pack	Cat. Nos.		<b>Double elbows – bespoke dimensions</b>		
	Aluminium	Copper	Please specify required length when ordering		
			<b>Horizontal elbow – right + left hand</b>		
			250 to 900 mm per arm		
			Rating (A)		
1	50400361		160		
1	50400362	55400362	250		
1	50400363	55400363	315		
1	50400364	55400364	400		
1	50400368		500		
1	50400365	55400365	630		
1	50400366	55400366	800		
1	50400367 <sup>1</sup>	55400367	1000		
			<b>Horizontal elbow – left + right hand</b>		
			250 to 900 mm per arm		
			Rating (A)		
1	50400371		160		
1	50400372	55400372	250		
1	50400373	55400373	315		
1	50400374	55400374	400		
1	50400378		500		
1	50400375	55400375	630		
1	50400376	55400376	800		
1	50400377 <sup>1</sup>	55400377	1000		
			<b>Vertical elbow – right + left hand</b>		
			300 to 900 mm per arm		
			Rating (A)		
1	50400461		160		
1	50400462	55400462	250		
1	50400463	55400463	315		
1	50400464	55400464	400		
1	50400468		500		
1	50400465	55400465	630		
1	50400466	55400466	800		
1	50400467 <sup>1</sup>	55400467	1000		
			<b>Vertical elbow – left + right hand</b>		
			300 to 900 mm per arm		
			Rating (A)		
1	50400471		160		
1	50400472	55400472	250		
1	50400473	55400473	315		
1	50400474	55400474	400		
1	50400478		500		
1	50400475	55400475	630		
1	50400476	55400476	800		
1	50400477 <sup>1</sup>	55400477	1000		

**Key :** How to select the correct configuration and finish  
 All examples on this page show 4 conductor galvanised lengths  
 No. of conductors and finish is dictated by the red number  
 0 =  4 conductors. Galvanised    2 =  4 conductors. Painted  
 1 =  5 conductors. Galvanised    3 =  5 conductors. Painted  
 Replace 0 with 1, 2, or 3 if required

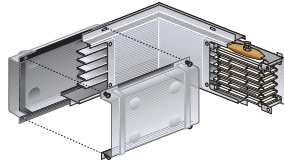
1 : The 1000 A aluminium is supplied painted RAL 7035 as standard

# MR medium rating busbar

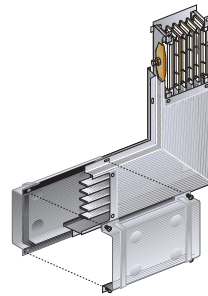
## single elbows



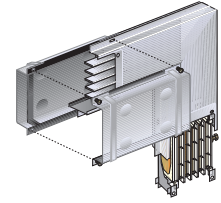
Horizontal elbow – right hand



Horizontal elbow – left hand



Vertical elbow – right hand



Vertical elbow – left hand



Dimensions and technical information **p. 44**  
Measuring bespoke dimensions **p. 49**

MR is fully compliant with IEC 61439-6 (BS EN 61439-6)  
Rated currents are at an average ambient temperature of 40° C (over and above the required standard of 35° C)  
Angles are 90° as standard. Other angles available on request. IP 55 (according to BS EN 60529)

Pack	Cat. Nos.		Single elbows – standard dimensions (300 + 300 mm)		
	Aluminium	Copper	Rating (A)	Weight (kg)	
				Aluminium	Copper
1	50400301		160	8.1	–
1	50400302	55400302	250	8.2	9.2
1	50400303	55400303	315	8.4	9.6
1	50400304	55400304	400	14.5	11.0
1	50400308		500	14.9	–
1	50400305	55400305	630	15.4	18.7
1	50400306	55400306	800	15.7	21.4
1	50400307 <sup>1</sup>	55400307	1 000	16.0	23.3
			<b>Horizontal elbow – left hand</b>		
			Rating (A)	Weight (kg)	
				Aluminium	Copper
1	50400311		160	8.1	–
1	50400312	55400312	250	8.2	9.2
1	50400313	55400313	315	8.4	9.6
1	50400314	55400314	400	14.5	11.0
1	50400318		500	14.9	–
1	50400315	55400315	630	15.4	18.7
1	50400316	55400316	800	15.7	21.4
1	50400317 <sup>1</sup>	55400317	1 000	16.0	23.3
			<b>Vertical elbow – right hand</b>		
			Rating (A)	Weight (kg)	
				Aluminium	Copper
1	50400401		160	8.1	–
1	50400402	55400402	250	8.2	9.2
1	50400403	55400403	315	8.4	9.6
1	50400404	55400404	400	14.5	11.0
1	50400408		500	14.9	–
1	50400405	55400405	630	15.4	18.7
1	50400406	55400406	800	15.7	21.4
1	50400407 <sup>1</sup>	55400407	1 000	16.0	23.3
			<b>Vertical elbow – left hand</b>		
			Rating (A)	Weight (kg)	
				Aluminium	Copper
1	50400411		160	8.1	–
1	50400412	55400412	250	8.2	9.2
1	50400413	55400413	315	8.4	9.6
1	50400414	55400414	400	14.5	11.0
1	50400418		500	14.9	–
1	50400415	55400415	630	15.4	18.7
1	50400416	55400416	800	15.7	21.4
1	50400417 <sup>1</sup>	55400417	1 000	16.0	23.3

Pack	Cat. Nos.		Single elbows – bespoke dimensions		
			Please specify required length when ordering		
			<b>Horizontal elbow – right hand</b>		
			250 to 900 mm per arm		
			Rating (A)		
	Aluminium	Copper			
1	50400321		160		
1	50400322	55400322	250		
1	50400323	55400323	315		
1	50400324	55400324	400		
1	50400328		500		
1	50400325	55400325	630		
1	50400326	55400326	800		
1	50400327 <sup>1</sup>	55400327	1 000		
			<b>Horizontal elbow – left hand</b>		
			250 to 900 mm per arm		
			Rating (A)		
1	50400331		160		
1	50400332	55400332	250		
1	50400333	55400333	315		
1	50400334	55400334	400		
1	50400338		500		
1	50400335	55400335	630		
1	50400336	55400336	800		
1	50400337 <sup>1</sup>	55400337	1 000		
			<b>Vertical elbow – right hand</b>		
			300 to 900 mm per arm		
			Rating (A)		
1	50400421		160		
1	50400422	55400422	250		
1	50400423	55400423	315		
1	50400424	55400424	400		
1	50400428		500		
1	50400425	55400425	630		
1	50400426	55400426	800		
1	50400427 <sup>1</sup>	55400427	1 000		
			<b>Vertical elbow – left hand</b>		
			300 to 900 mm per arm		
			Rating (A)		
1	50400431		160		
1	50400432	55400432	250		
1	50400433	55400433	315		
1	50400434	55400434	400		
1	50400438		500		
1	50400435	55400435	630		
1	50400436	55400436	800		
1	50400437 <sup>1</sup>	55400437	1 000		

**Key : How to select the correct configuration and finish**  
 All examples on this page show 4 conductor galvanised lengths  
 No. of conductors and finish is dictated by the red number  
 0 = 4 conductors. Galvanised    2 = 4 conductors. Painted  
 1 = 5 conductors. Galvanised    3 = 5 conductors. Painted  
 Replace 0 with 1, 2, or 3 if required

1 : The 1000 A aluminium is supplied painted RAL 7035 as standard