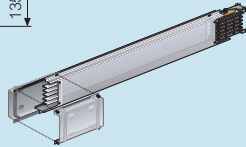
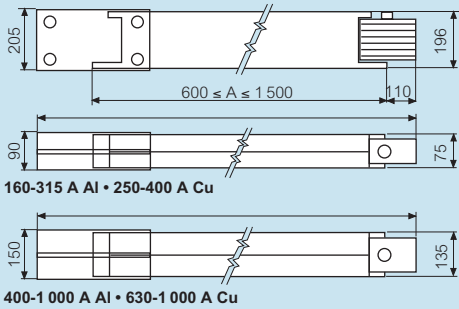


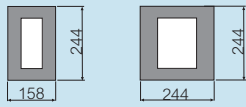
MR medium rating busbar

technical information (continued)

Trunking lengths – 600 to 1500 mm without outlets

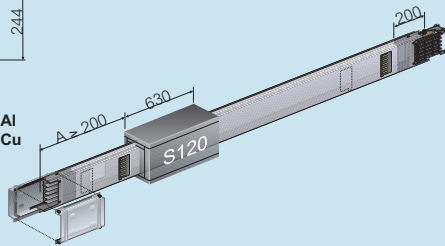


Trunking lengths with S120 fire barrier



160-315 A Al
250-400 A Cu

400-1000 A Al
630-1000 A Cu



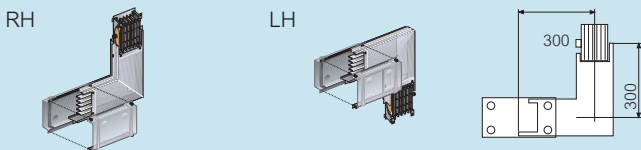
Single elbows – standard dimensions (300 + 300 mm)

90° as standard. Other angles available on request. IP 55 quick connection

Horizontal elbow



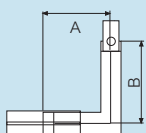
Vertical elbow



Bespoke dimensions

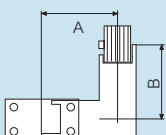
Measure from the long casing to the axis of the elbow (see measuring bespoke dimensions p. 49)

Special horizontal elbow



Bespoke dimensions (mm)		
Min		Max
250 ≤	A	≤ 900
250 ≤	B	≤ 900

Special vertical elbow



Bespoke dimensions (mm)		
Min		Max
300 ≤	A	≤ 900
300 ≤	B	≤ 900

All dimensions (mm) are nominal

Double elbows

Standard dimensions (300 + 300 + 300 mm)

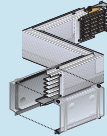
90° as standard. Other angles available on request. IP 55 quick connection

Bespoke dimensions

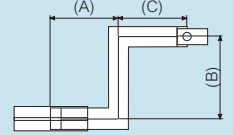
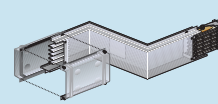
Measure from the long casing to the axis of the elbow

Double horizontal elbow

Right + left



Left + right

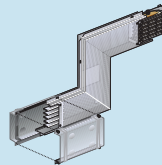


Bespoke dimensions (mm)

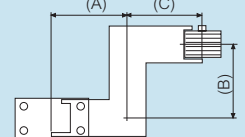
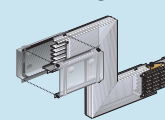
Min		Max
250 ≤	A, B, C	≤ 900

Double vertical elbow

Right + left



Left + right

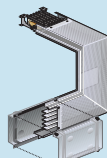


Bespoke dimensions (mm)

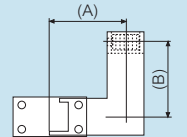
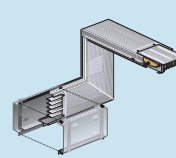
Min		Max
300 ≤	A, B, C	≤ 900

Vertical + horizontal elbows

RH + RH



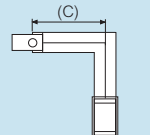
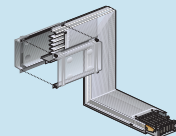
RH + LH



LH + RH



LH + LH

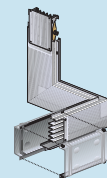


Bespoke dimensions (mm)

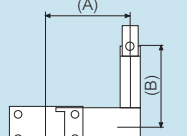
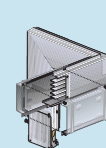
Min		Max
300 ≤	A, B, C	≤ 900

Horizontal + vertical elbows

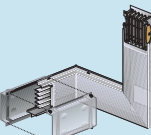
RH + RH



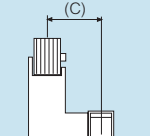
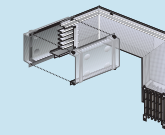
RH + LH



LH + RH



LH + LH



Bespoke dimensions (mm)

Min		Max
300 ≤	A, B, C	≤ 900